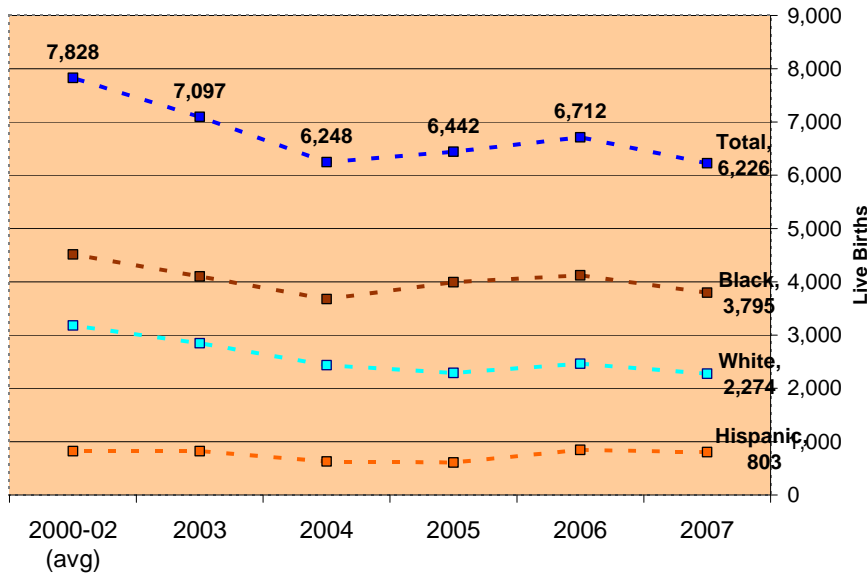


Trends in births to Cleveland mothers and teens, 2000 - 2007
 Cleveland Department of Public Health
 January 2010

The number of live births to Cleveland mothers has been relatively steady since 2004.

Figure 1 below shows that there were 6,226 live births among Cleveland mothers in 2007, similar to 6,248 for 2004. Prior to 2004, at least 7,000 live births were registered for Cleveland through the Bureau of Vital Statistics, Ohio Department of Health.

Figure 1. Live births for Cleveland, by race (Black/African American) and ethnicity (Hispanic).



Births to teen mothers

Table 1 shows the total number of births to teen females age 15 to 19. For the past five years, the average number of live births to teens was 1,218 (range 1,136 to 1,293).

Table 1. Birth counts and rates to teens age 15 to 19 for Cleveland

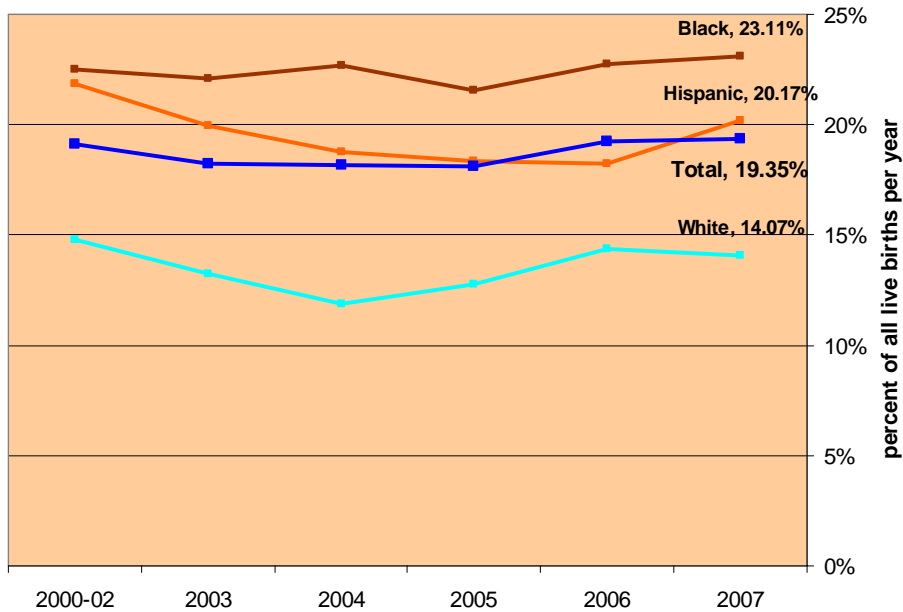
Year	Total Live Births	Live Births	Population Birth	Annual Live Birth Rate
	All ages	Age 15-19	per 1,000 female pop'n age 15-19	per 1,000 live births, all ages
2007	6,226	1,205	65.7	121.1
2006	6,712	1,293	72.8	118.7
2005	6,442	1,165	68.2	112.4
2004	6,248	1,136	69.3	113.0
2003	7,097	1,293	80.7	109.8

The table includes two rates that use different denominators. The **population birth rate to teen females age 15 to 19** uses the annual census of females age 15 to 19 as the denominator. This rate adjusts for changes in the population of teen females. We can see that the population birth rate for teen females dropped from 18.6% from 2003 to 2007 (80.7 births per 1,000 teens in 2003 to 65.7 births per 1,000 in 2007). From this we conclude that, since 2003, fewer teens per 1,000 teen population are giving birth, and that this rate has remained steady among teens.

The second rate uses the annual total number of live births as the denominator. This rate is strongly impacted by the total number of live births in the entire Cleveland population. The **annual Live Birth rate for teen females age 15 to 19** in Cleveland has increased 10.3% from 2003 to 2007 (from 109.8 per 1,000 live births to 121.1 per 1,000 live births). While the total number of births each year was decreasing, a larger percent of all live births were to teen mothers, causing the live birth rate among teens to increase.

In fact, for 2007, **almost one in five births to Cleveland mothers were to teens (Figure 2)**. From 2000 to 2007, between 18.1% and 19.4% of all live births for Cleveland were to teen mothers age (as young as 12) to 19 years. Among black females, nearly 1 in 4 live births annually are to teens. The numbers of births to teens under 15 is very small and is not significant in these trends.

Figure 2. Percent of births to teen mothers for Cleveland, 2000-2007



These birth trends and rate measurements have a large impact on how we view birth trends. First, teen births continue to represent a significant percentage of all live births annually for Cleveland since 2003. More needs to be done to reduce the number of births to teens through education, counseling, peer-to-peer engagement and family planning. In addition, responsibility and commitment, contraception and community engagement among teen and young male adults are messages that must be

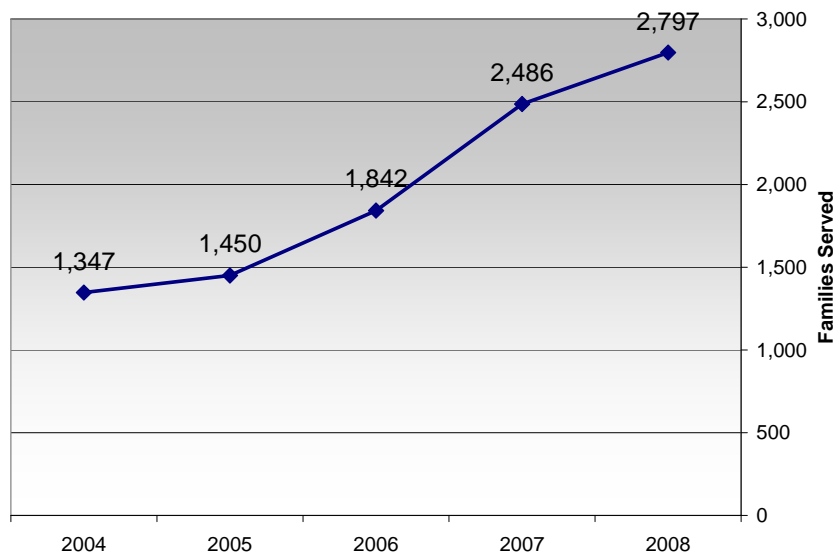
strengthened through parenting, the schools, and faith-based agencies. Parenting is the first priority.

MomsFirst role in improving birth outcomes in Cleveland

The Cleveland Department of Public Health receives federal funding to administer the MomsFirst program whose goal is to reduce disparities in infant mortality and poor birth outcomes within the City. African American women and teens are the primary targets of outreach, although all women perceived to be at risk are eligible for enrollment.

Increasing funding and service: In 2008, MomsFirst served nearly 2,800 families, a 12.5% increase from 2007. (Figure 3) In fact, the number of families served increased 35% from 2006 to 2007 when additional participants were being referred from Cuyahoga County's Help Me Grow program. In 2007, additional funding from the county was received to expand staffing to serve more families in the community.

Figure 3. Number of families served by MomsFirst



Pregnancy Prevention Education: MomsFirst provides pregnancy prevention education in addition to direct services for adolescents, working in collaboration with the Cleveland Metropolitan Schools, Charter schools, and a number of community-based agencies. Through Peer Advisory Groups, MomsFirst has also given teens a voice.

Outreach to adolescents is carried out through case finding in the city's neighborhoods as well as Cleveland Metropolitan Schools and Charter Schools. MomsFirst staff visit the schools weekly and conduct a number of presentations in health classes and study halls on topics such as pregnancy and STD prevention, family planning, and goal setting. MomsFirst works together with CMSD guidance counselors, school nurses, teachers and other staff to reach at-risk teens within the building. Peer Advisory Groups have also been established in each school offering the opportunity for all teens to explore health and wellness topics such as peer pressure, self esteem, and healthy relationships. Input from the teens is used to plan a city-wide youth summit focused on topics of most interest to teens.

Technical note: Population estimates adjust for aging and overall migration

To generate rates per 1,000 population age 15 to 19, we needed a denominator reflecting the estimated number of females age 15 to 19 in 2007 for Cleveland. We needed to adjust for an aging population (cohort effect) and for changes in overall population (migration).

This denominator was calculated using 2000 U.S. Census population tables by age for the Cleveland female population. For example, those 19,790 Cleveland females that were age 8 to 12 in 2000 (as reported in the U.S. Census) grew to be age 15 to 19 by 2007, ignoring migration. Because the Cleveland population dropped 7.38% from 2000 to 2007, we applied this adjustment to all age groups. We do not have specific information which age groups arrived or left the city. The estimated population of females age 15 to 19 in 2007 for Cleveland was calculated as $19,790 - (19,790 \times 0.0738) = 18,329$.

So, the population birth rate per 1,000 females age 15 to 19 in 2007 was

$$1,205 \text{ births} / 18,329 \text{ population} * 1,000 = \quad \mathbf{65.7 \text{ live births per 1,000 teen females age 15 to 19 for 2007}}$$

Similar adjustments were made to determine teen population birth rates for 2003 through 2006.

These analyses were performed by the Office of Biostatistics, Cleveland Department of Public Health and were released January 25, 2010. Additional information was provided by the MomsFirst Program. See www.clevelandhealth.org and www.clevelandhealth.info for more information.

